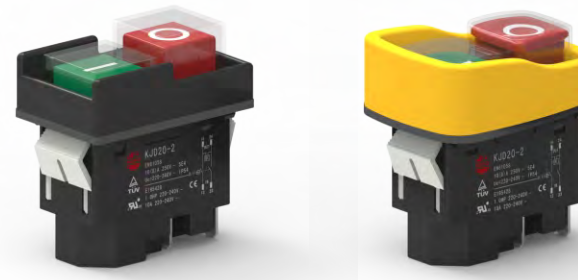


KJD20-3



KJD20-5

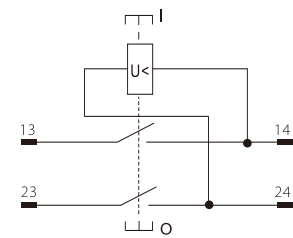


KJD20-2

Description

Integrated switch with Power-cut and under voltage protection. In case of Power-off or under voltage switch will cut off automatically, and it should re-start by hand when power is re-connected. The advantage of our patented technology is high current with small size.

Function

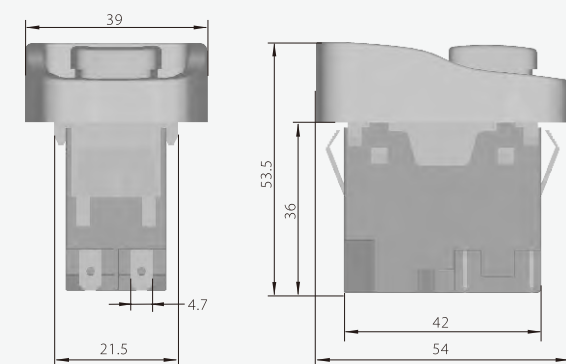


Specifications

Standard	TUV,CE (EN61058,EN60947)		UL,CUL (UL508,E195428)	
	120V~	250V~	100-120V~	220-240V~
Rated Voltage	120V~	250V~	100-120V~	220-240V~
Rated Current	10(8)A		12A 3/4HP	10A 1HP
Degree of Protection	IP54			
Number of operating Cycles	5E4			

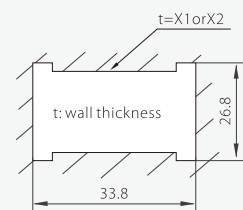
Reference Dimension

KJD20-2



Snap-in Mounting Size

KJD20-2



X1: value "t" with Rubber Gasket
X2: value "t" without Rubber Gasket

X1	Y	X2
2~3	43.4 $^{+0.1}_0$	4~5
3~4	43.8 $^{+0.1}_0$	5~6
4~5	44.2 $^{+0.1}_0$	6~7

Order options

Appearance and Panel	Coil Voltage/Frequency	Marking on Button	Accessories
KJD20-5 	V1 120V~/50Hz	M1	Rubber Seal
	V2 120V~/60Hz	M2	A1 t3
	V3 230V~/50Hz	M3	A2 t3
	V4 230V~/60Hz	M4	A3 t3
	V5 240V~/50Hz	M5	
	V6 240V~/60Hz	M6	
KJD20-2 			